

# Daily Darling River Summary

Issue 16, Friday 25th April 2025

## KEY POINTS

- \* Barwon River has peaked at Brewarrina and is now falling slowly.
- \* Paroo River headwaters at approx. -30.67359 S, 143.86645 E (as at 24/04/2025).
- \* Paroo River headwaters are expected to reach the Mt Jack and Talalara gauges from 30/04/2025.
- \* NPWS are monitoring Talyawalka Creek at Wilga.

**KEY** Rising ↑  
Steady →  
Falling ↓

(as at 6am)

River	Location	Type	Height (m)	Rise / Fall (cm)	Vol (ML/d)	Flood of Record	Predicted Height & Date	
Barwon	Brewarrina	Auto	6.50	↓	8	27316	<b>12.14m</b> 1893	<b>PEAKED</b> Min -
	- Brewarrina (Total Flow)	Auto	-	↓	-	40598	-	-
Culgoa	Kenebree	Auto	5.15	↓	22	6006	<b>7.50m</b> 1893	- -
Warrego	Fords Bridge Bywash	Auto	3.01	↓	2	2644	<b>3.21m</b> 1990	<b>PEAKED</b> Mod -
	- Toorale at the Dicks Dam	Auto	1.42	↑	-	1236	-	-
Cuttaburra	Cuttaburra Channel at Turra	Auto	2.13	↓	6	1345	-	-
Paroo	Wanaaring	Manual	2.82	↓	8	-	<b>4.88m</b> 1990	<b>PEAKED</b> - -
	Mt Jack	Manual	-	→	-	-	-	-
	Talalara (Paroo Overflow)	Manual	-	→	-	-	-	-
	Porters Crossing	Auto	0.65	→	-	-	-	-
Darling	Bourke	Auto	10.19	↑	15	36005	<b>14.18m</b> 1976	<b>11.20m</b> Min 29/04/2025
	Louth	Auto	8.69	↑	15	25746	<b>13.94m</b> 1890	<b>10.90m</b> Mod 6/05/2025
	Tilpa	Auto	8.22	↑	19	21251	<b>13.35m</b> 1976	<b>11.40m</b> Mod 10/05/2025
	Trevallyn	Auto	9.35	↑	21	19562	<b>11.93m</b> 1976	- -
	Wilcannia	Auto	6.76	↑	24	16153	<b>11.59m</b> 1976	<b>9.0m</b> Min 15/05/2025
	Nelia Gaari	Auto	61.64	↑	22	-	-	-

# Daily Darling River Summary

Issue 16, Friday 25th April 2025

River	Location	Type	Height (m)		Rise / Fall (cm)	Vol (ML/d)	Flood of Record	Predicted Height & Date	
Talyawalka	Wilga (NPWS)	Property	-	➔	-	-	-	-	-
	At Barrier Hwy	Auto	Error*		-	-	-	-	-

\* Error continues to be investigated.

■ **Data Sources**

- 1. WaterNSW
- 2. Bureau of Meteorology

■ **Requests for Assistance**

NSW SES  
**132 500**

Agriculture & Animal Services Function Area (AASFA)  
**1800 814 647**

Access the latest warnings  
and information via  
[www.hazardwatch.gov.au](http://www.hazardwatch.gov.au)

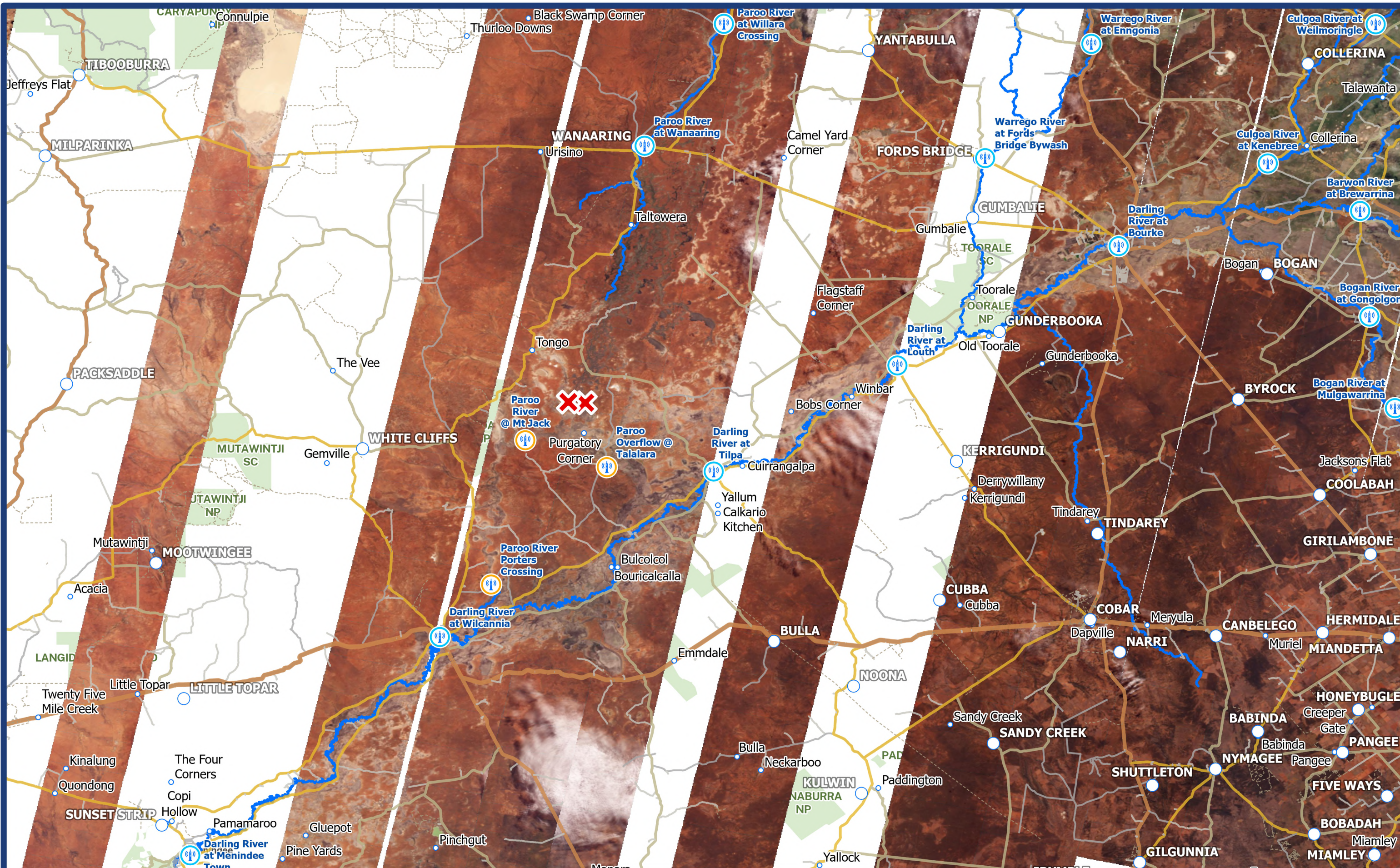


**Contact us**

For more information, please contact Western Zone via:  
E: [wtz.ops@ses.nsw.gov.au](mailto:wtz.ops@ses.nsw.gov.au)  
W: [www.ses.nsw.gov.au](http://www.ses.nsw.gov.au)







Legend

	BOM River Gauges		Water NSW Temp Gauge		Headwater Coordinate
--	------------------	--	----------------------	--	----------------------

Western Zone Overview

PLANET Image Date: 24 APRIL 2025

Map: 25 APRIL 2025 09:00am

Disclaimer  
Imagery: Image © 2025 Planet Labs PBC

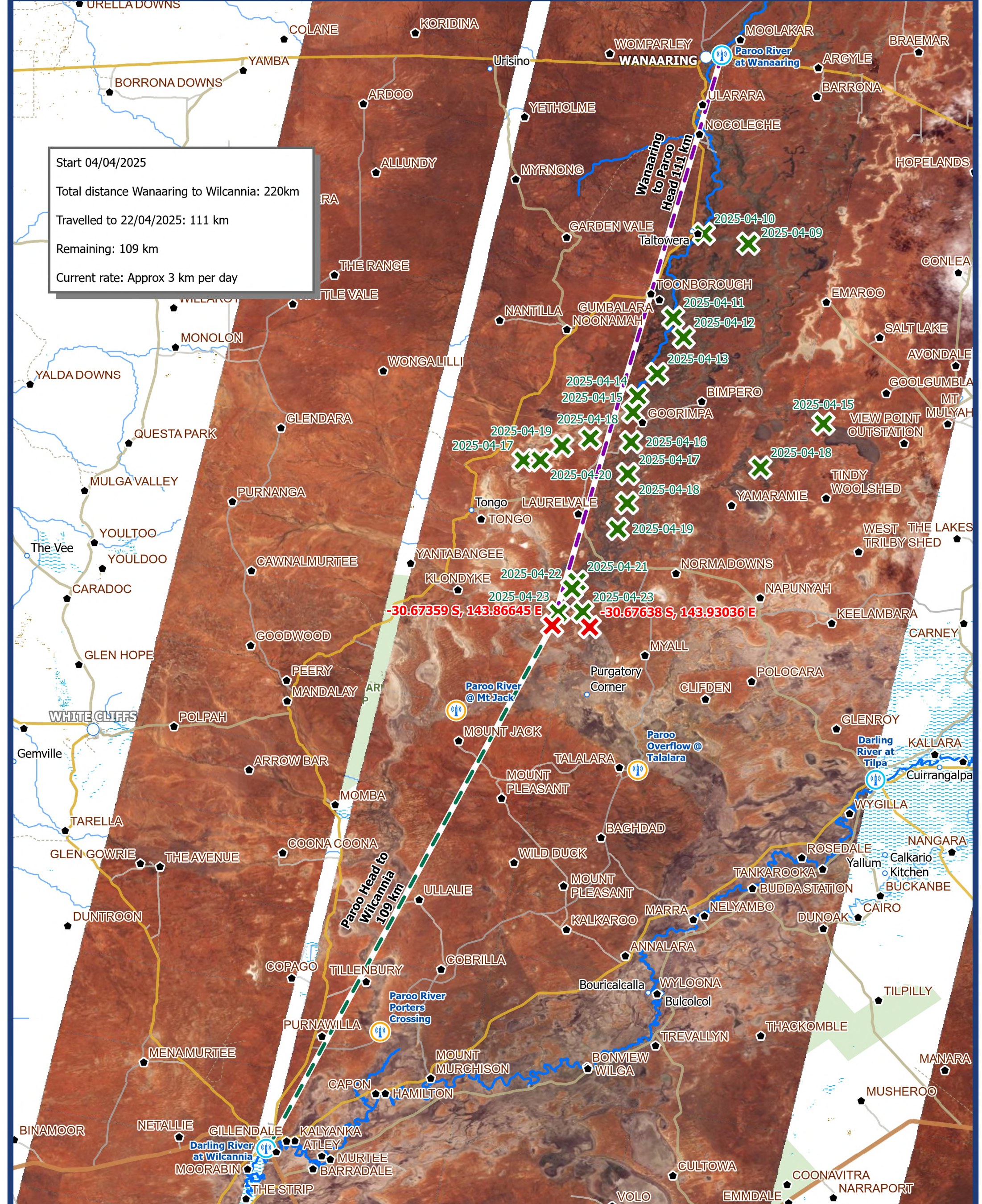
0 25 50  
Kilometres

Projection: GCS WGS 1984  
Date Saved: 25/04/2025









# WESTERN ZONE

PAROO RIVER  
PLANET Image Date: 24 APRIL 2025  
Map: 25 APRIL 2025 09:00am



Projection: GCS WGS 1984  
Date Saved: 25/04/2025

Legend

BOM River Gauges

Water NSW Temp Gauge

Headwater Coordinate

Previous Flood Head

Disclaimer  
Imagery: Image © 2025 Planet Labs PBC



