



UPPER LACHLAN SHIRE SNOW PLAN

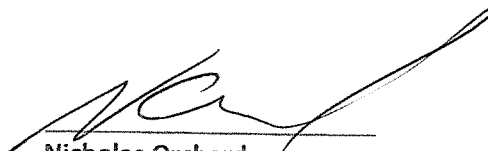
**A LOCAL SUB PLAN OF THE
THE NSW STATE STORM PLAN**

JUNE 2017 VERSION 3.0

AUTHORISATION

This sub plan is issued under the authority of the State Emergency and Rescue Management Act 1989 and the State Emergency Service Act 1989. This sub plan has been recommend by the NSW SES Local Controller (Upper Lachlan Unit) and endorsed by the Upper Lachlan Local Emergency Management Committee.

Recommended



Nicholas Orchard

Local Controller – Upper Lachlan
NSW State Emergency Service

Dated: 24/06/2017

Approved



Chairperson
Local Emergency Management
Committee – Upper Lachlan

Dated: 29/06/2017

REVISION

This plan will be revised:

- a) No later than every 3 years, or;
- b) After any significant snow falls within the Upper Lachlan, or;
- c) As requested by the Local Controller of the NSW SES and/or the Chairperson of the Upper Lachlan Local Emergency Management Committee.

VERSION HISTORY

The following table lists all previously endorsed versions of this plan.

Plan	Endorsed
Upper Lachlan LGA Snow Plan, Version 2, September 2012	

AMENDMENT LIST

Proposals for amendment to this sub plan are to be forwarded to:

Local Controller – NSW SES
Upper Lachlan Shire
PO Box 209
Crookwell NSW 2583

Amendments promulgated are to be certified below when entered.

Amendment Number	Description	Updated by	Endorsed Date

DISTRIBUTION LIST

External:

Region Emergency Operations Controller (REOCON).....	1
South Eastern Region Emergency Management Officer (REMO).....	1
Upper Lachlan Local Emergency Operations Controller (LEOCON).....	1
Upper Lachlan Local Emergency Management Officer ((LEMO) and EOCs).....	1
Upper Lachlan LEMC Members (copy each).....	1
NSW Police, Local Area Command	1
Fire and Rescue NSW South Zone 5.....	1
NSW Rural Fire Service Southern Tablelands Zone	1
Ambulance Service of NSW South Eastern Sector.....	1
Commonwealth Bureau of Meteorology.....	1
Southern NSW Local Health District	1
NSW Ministry of Transport	1
NSW Department of Commerce	1
NSW Department of Environment and Climate Change	1
NSW Department of Primary Industry.....	1
NSW Department of Family and Community Services, Southern Region Disaster Recovery	1
Roads and Maritime Services, Regional Office and TMC (copy each)	1
Essential Energy	1
Telstra	1
District Schools (copy each).....	1

Internal:

NSW SES State Headquarters	1
NSW SES Southern Highlands Region Headquarters.....	1
NSW SES Bigga, Collector & Crookwell, Units (copy each).....	1
NSW SES Southern Highlands Units (copy each)	1
NSW SES Central West Region Headquarters.....	1
NSW SES Lachlan Region Headquarters	1

Spares.....	10
-------------	----

CONTENTS

AUTHORISATION	i
REVISION i	
VERSION HISTORY	ii
AMENDMENT LIST.....	ii
DISTRIBUTION LIST.....	iii
CONTENTS.....	iv
ABBREVIATIONS	vi
GLOSSARY	vii
PART 1 - OUTLINE AND SCOPE OF THIS PLAN	1
1.1 Purpose.....	1
1.2 Authority	1
1.3 Scope	1
1.4 Area Covered by the Plan	1
1.5 Background of Significant Snowfalls affecting the Upper Lachlan	1
PART 2 - RESPONSIBILITIES	2
2.1 General	2
2.2 NSW State Emergency Service	2
2.3 Ambulance Service of NSW (AS NSW).....	3
2.4 Upper Lachlan shire Council	3
2.5 Education Facilities (including Catholic Education Office, Department of Education and Communities, Private Schools and Early Learning Centres)	3
2.6 Energy and Utility Services Functional Area (essential Energy, Telstra, Gas Suppliers)	4
2.7 Fire & Rescue NSW (FRNSW):.....	4
2.8 Health Services Functional Area	4
2.9 Local Emergency Management Officer (LEMO)	4
2.10 Local Emergency Operations Controller (LEOCON):.....	4
2.11 NSW Police Force (NSWPF)	5
2.12 NSW Rural Fire Service (NSW RFS)	5
2.13 Office of Environment And Heritage (OEH).....	5
2.14 Roads and Maritime Services (RMS)	6
2.15 Welfare Services Functional Area.....	6
2.16 Animal and Agriculture Functional Area	6
2.17 Transport Services	6
2.18 Environmental Services	7
2.19 Engineering Services.....	7
PART 3 - PREVENTION	8
3.1 General	8
3.2 Mitigation	8
PART 4 - PREPAREDNESS	8
4.1 Maintenance of This Plan	8
4.2 Training.....	8

4.3	Resources	8
4.4	Public Education	9
4.5	Agency Communications Systems	9
4.6	Snow Intelligence System	9
PART 5 - CONCEPT OF OPERATIONS		10
5.1	Command and Control	10
5.2	Operations Centres	10
5.3	Liaison	10
5.4	Public Request for Assistance	10
5.5	Information and Media	11
5.6	Emergency Alert	11
PART 6 - RESPONSE		12
6.1	Mobilisation	12
6.2	Preliminary Deployments	12
6.3	Snow Characteristics and Control Measures	13
6.4	Traffic Management	14
6.5	Increased Road Traffic	15
6.6	Stranded Travellers	15
6.7	Places of Refuge	16
6.8	Evacuation and Evacuation Centres	16
6.9	Essential Services	17
6.10	Resupply	17
6.11	Assistance for Animals	17
6.12	End of Response Operations	17
PART 7 - RECOVERY		18
7.1	Recovery Operations	18
APPENDICES		19
<ul style="list-style-type: none"> • Upper Lachlan Shire LGA Severe Weather Map - snow down to 800m • Upper Lachlan Shire LGA Severe Weather Map - snow down to 700m • Upper Lachlan Shire LGA Severe Weather Map - snow down to 600m 		

ABBREVIATIONS

BoM	Australian Government Bureau of Meteorology
DEC	Department of Education and Communities
EA	Emergency Alert
EMPLAN	New South Wales State Emergency Management Plan
ESO	Emergency Service Organisations
FACS	Family and Community Services
FRNSW	Fire and Rescue NSW
LGA	Local Government Area
LEMO	Local Emergency Management Officer
LEOC	Local Emergency Operations Centre
LEOCON	Local Emergency Operations Controller
LO	Liaison Officer
NSW SES	New South Wales State Emergency Service
NSWPF	New South Wales Police Force
NSW RFS	New South Wales Rural Fire Service
OEH	Office of Environment and Heritage
REMO	Region Emergency Management Officer
REOCON	Region Emergency Operations Controller
RMS	Roads and Maritime Services
SEOCON	State Emergency Operations Controller
SITREP	Situation Report
TMC	Transport Management Centre (RMS)

GLOSSARY

Combat Agency. Means the agency identified in the State EMPLAN as the agency primarily responsible for controlling the response to a particular emergency.

Emergency Alert. A national telephony based alerting system available for use by emergency service agencies to send SMS and voice messages to landlines and/or mobile telephones (by billing address) in times of emergency.

Incident Controller. The role of the Incident Controller will be appointed by the NSW SES to establish, lead and manage an Incident Management Team (IMT) to manage the range of activities to establish control and respond to an incident (i.e. flood, storm, tsunami operation).

Liaison Officer. A person, nominated or appointed by an organisation or functional area, to represent that organisation or functional area at a control centre, emergency operations centre, coordination centre or site control point, a liaison officer maintains communications with and conveys directions/requests to their organisation or functional area, and provides advice on the status, capabilities, actions and requirements of their organisation or functional area

NSW SES Local Controller. Appointed Local Controller as per the SES Act 1989 (4th January 2013).

Significant Snowfall. Snow that affects any part of the Upper Lachlan LGA causing significant disruption of transport services and major interruptions to utilities (gas, water, electricity and telecommunications)

PART 1 - OUTLINE AND SCOPE OF THIS PLAN

1.1 PURPOSE

- 1.1.1 It has been recognised by the NSW SES and the LEMC of the Upper Lachlan Shire, that significant snowfalls within the Shire may have a significant impact on the communities within the Local Government Area (LGA).
- 1.1.2 As a significant snowfall is not specifically covered under the State Storm Plan, this sub plan has been designed to complement the State Storm Plan, other supporting plans, legislation, policies and MOUs established with agencies in NSW.
- 1.1.3 This sub plan covers preparedness measures, the conduct of response operations and the coordination of immediate recovery measures in the event of significant falls of snow (referred to snowfalls throughout the plan) within the Upper Lachlan Local Government area.

1.2 AUTHORITY

- 1.2.1 This sub plan is issued under the authority of the State Emergency and Rescue Management Act 1989 and the State Emergency Service Act 1989. This sub plan has been recommended by the NSW SES Upper Lachlan Local Controller and endorsed by the Upper Lachlan Local Emergency Management Committee.

1.3 SCOPE

- 1.3.1 This Plan sets out the prevention; preparation; response and initial recovery arrangements for significant snow activity and the responsibilities of agencies and organisations with regard to these functions.
- 1.3.2 This Plan covers arrangements relating to significant snow related events accompanied by any of the phenomena specified above.
- 1.3.3 This plan must be read in conjunction with the State Emergency Management Plan (EMPLAN) and the NSW State Storm Plan.

1.4 AREA COVERED BY THE PLAN

- 1.4.1 This sub plan covers the Local Government Area of the Upper Lachlan Shire.

1.5 BACKGROUND OF SIGNIFICANT SNOWFALLS AFFECTING THE UPPER LACHLAN

- 1.5.1 In 2007, a snow storm event during July resulted in many road closures, storm damage to buildings from strong winds, and downed power lines that disrupted supplies for up to a week.
- 1.5.2 In July 2015, a significant snow event resulted in many road closures and damage to buildings that disrupted Crookwell township for up to a week.

PART 2 - RESPONSIBILITIES

2.1 GENERAL

2.1.1 General responsibilities of emergency services and supporting agencies (including functional areas) are set out in the NSW State Storm Plan. Some specific responsibilities are expanded upon in the following paragraphs that relate to response to snowfalls within the Upper Lachlan Shire.

2.2 NSW STATE EMERGENCY SERVICE

2.2.1 The NSW SES is responsible under the State Emergency Service Act for response operations in relation to any storm event. In addition to the State Storm Plan, the NSW SES Upper Lachlan Local Controller will prepare and maintain this Local Sub Plan for the Upper Lachlan Shire and coordinate a public education program so those residents in snow prone areas can be made aware of the snow threat.

2.2.2 In the event of a significant snowfall, the NSW SES will:

- a. Control, coordinate and conduct storm damage operations as per SES Act and State Storm Plan;
- b. Coordinate the response of all assisting agencies to assist with storm response;
- c. With the assistance of the Welfare Services Function Area, coordinate the provision of emergency food and the transport of medical supplies to snow bound people and/or communities as required;
- d. Where possible, arrange for support (e.g., accommodation and meals) for emergency service organisation members and volunteers assisting them if required;
- e. Where possible, assist the NSWPF, RMS and Upper Lachlan Shire Council with road closure and traffic control operations;
- f. Exercise financial delegations relating to the use of appropriate funding (e.g. NDRA Funding/Emergency Orders);
- g. Maintain communications with the LEOCON, LEMO and members of the LEMC advised of the snow situation and the operational response;
- h. Coordinate and manage any public information for a snow event, including maintaining regular communication (using Social Media and Media Releases etc.) and direct engagement with the affected community at timely intervals as required.

2.3 AMBULANCE SERVICE OF NSW (AS NSW)

2.3.1 In addition to the State Storm Plan, AS NSW in response to significant snowfalls shall where possible:

- a. Assist with the evacuation of elderly and/or infirm people;
- b. Deploy ambulance resources to snow affected areas if access is expected to be lost;
- c. Provide a Liaison Officer to the NSW SES Local Operations Centre, or to the LEOC if activated, to assist with the provision of information relating to Ambulance Operations.

2.4 UPPER LACHLAN SHIRE COUNCIL

2.4.1 In addition to the State Storm Plan, Upper Lachlan Shire Council shall where possible:

- a. Deploy personnel and resources for snow response related activities as coordinated by NSW SES;
- b. Close and reopen council roads affected by snow;
- c. Make Council premises/facilities (public halls etc.) available as places of refuge for stranded members of the community. In a recovery phase after a significant snow or storm event, these premises should also be made available for the purpose of being an information centre to allow community engagement with assisting agencies.

2.5 EDUCATION FACILITIES (INCLUDING CATHOLIC EDUCATION OFFICE, DEPARTMENT OF EDUCATION AND COMMUNITIES, PRIVATE SCHOOLS AND EARLY LEARNING CENTRES)

2.5.1 As each education facility within the Upper Lachlan Shire will have a unique impact of snow, it is recommended that each school prepare and maintain their own plan for managing the welfare of their students and staff. The variants to consider are:

- a. Time of snowfall (before, during or after school);
- b. Where students and staff of the school have to travel to or from;
- c. The school's transport plan;
- d. The ability to remain as a place of refuge for students and staff.

2.5.2 Where possible, the NSW SES will provide assistance by providing Education Facilities a warning of likelihood of snow in a timely manner.

2.5.3 Where Education Facilities require assistance with the welfare or evacuation of students during a snow event, they are to contact the NSW SES immediately.

2.5.4 If suitable, Education Facilities may provide space in schools for either place of refuge or evacuation centres where necessary.

2.6 ENERGY AND UTILITY SERVICES FUNCTIONAL AREA (ESSENTIAL ENERGY, TELSTRA, GAS SUPPLIERS)

- 2.6.1 In addition to the State Storm Plan, Energy and Utility Providers shall where possible:
- a. Provide advice to NSW SES and LEOCON of any need to disconnect energy or telecommunication supplies and of any timetable for reconnection;
 - b. Energy providers assist with the provision of generators for temporary power supply;
 - c. Energy suppliers to clear or make safe any hazard caused by power lines or electrical reticulation equipment;
 - d. Assess the necessity for and implement the disconnection of customer's energy or telecommunication installations where these may present a hazard.

2.7 FIRE & RESCUE NSW (FRNSW):

- 2.7.1 In addition to the State Storm Plan, FR NSW during significant snowfalls shall where possible:
- a. Provide personnel and vehicles for snow related response activities;
 - b. Liaise with the NSW Rural Fire Service to maintain adequate fire coverage to isolated communities;
 - c. Liaise with the NSWPF to maintain responsibilities for the provision of rescue services in isolated communities as per the SERM Act 1989;
 - d. Assist NSW SES with the delivery of evacuation warning and assist with the conduct of evacuations.

2.8 HEALTH SERVICES FUNCTIONAL AREA

- 2.8.1 In addition to the State Storm Plan, the Health Services Functional area will assist with a response to significant snowfalls in the Upper Lachlan where possible:
- a. Provide a Liaison Officer to the NSW SES Local Operations Centre, or to the LEOC if activated, to assist with the provision of information relating to Health Services

2.9 LOCAL EMERGENCY MANAGEMENT OFFICER (LEMO)

- 2.9.1 Provide executive support to the LEOCON.
- 2.9.2 Assist the LEOCON and Incident Controller by maintaining liaison with affected agencies from Alert Stage (refer 6.1.1a of this sub plan)

2.10 LOCAL EMERGENCY OPERATIONS CONTROLLER (LEOCON):

- 2.10.1 Monitor snow response operations within their respective area of operations;
- 2.10.2 Coordinate support to the Incident Controller as required.

2.11 NSW POLICE FORCE (NSWPF)

2.11.1 In addition to the State Storm Plan, the NSWPF during a significant snowfall event shall where possible:

- a. Manage traffic control operations in conjunction with NSW SES, Upper Lachlan Shire Council and RMS;
- b. Assist with the checking the welfare of vulnerable members of the community (travellers stranded on roads/rail, elderly etc.);
- c. Assist with the conduct of evacuations;
- d. Secure evacuated areas;
- e. Coordinate the registration of evacuees;
- f. Assist with the delivery of evacuation warnings.

2.12 NSW RURAL FIRE SERVICE (NSW RFS)

2.12.1 In addition to the State Storm Plan, the NSW RFS will assist where possible during a significant snowfall event;

- a. Inform the Incident Controller about snow conditions and response needs in their own communities;
- b. Disseminate snow information on behalf of the Incident Controller;
- c. Provide personnel and high-clearance vehicles for snow related response activities;
- d. Liaise with the FRNSW to ensure adequate fire coverage to isolated villages and towns when roads are closed by significant snowfalls;
- e. Assist with reconnaissance of snow affected areas;
- f. Assist with the staffing of road closures;
- g. Assist with the delivery of evacuation warnings and assist with the conduct of evacuations;
- h. Allow access to outlying NSW RFS facilities/stations within affected areas to be places of refuge for stranded members of the public if suitable.

2.13 OFFICE OF ENVIRONMENT AND HERITAGE (OEH)

2.13.1 OEH through NPWS as a significant asset manager within the Upper Lachlan shall normally manage their own asset during a storm or snow event. If required, OEH may call SES for assistance during snow storms operations.

- a. Wombeyan Karst Conservation Reserve
- b. Mares Forest national Park
- c. Tarlo River national Park

2.13.2 OEH are to provide timely information to any known visitors within the Upper Lachlan National Park about any pending snow forecasts by utilising established communication methods for other types of emergencies such as bushfires and floods.

2.14 ROADS AND MARITIME SERVICES (RMS)

2.14.1 Under the direction of the NSWPF or Incident Controller, close and reopen roads affected by significant snowfalls;

2.14.2 Establish and maintain a public information service on road closures;

2.14.3 Assist with the provision of information to motorists through the use of variable message signs;

2.14.4 If requested, provide a Liaison Officer to the NSW SES Operations Centre, or LEOC when activated, to assist with the management of road information.

2.14.5 Commence procedures with suitable plant and equipment to reopen roads when safe to do so.

2.15 WELFARE SERVICES FUNCTIONAL AREA

2.15.1 In addition to the State Storm Plan, the Welfare Services Functional Area will assist with a response to significant snowfalls in the Upper Lachlan where possible:

- a. Manage any evacuation centres that will be established in accordance with this plan;
- b. Assist members of the community during the recovery phase of this plan.

2.16 ANIMAL AND AGRICULTURE FUNCTIONAL AREA

2.16.1 In addition to the State Storm Plan, the Animal and Agriculture Functional Area will assist in matters relating to livestock, companion animals and wildlife including:

- a. Coordination of the supply and distribution of emergency fodder supplies and other materials;
- b. With support of Participating and Supporting Organisations, manage the care of companion animals
- c. Provide animal care services for wildlife, domestic animals and companion pets of victims evacuated from an area affected by snow.

2.17 TRANSPORT SERVICES

2.17.1 In addition to the State Storm Plan, the Transport Services Functional Area where possible will:

- a. Coordinate the provision of transport support as required by other Agencies and Functional Areas;
- b. Coordinate movement of emergency equipment and personnel
- c. Evacuate people
- d. Provide medical transport at the request of the Ambulance Service
- e. Maintain and operate a roads condition/closure advisory service to Agencies, other Functional Areas and members of the public.

2.18 ENVIRONMENTAL SERVICES

2.18.1 In addition to the State Storm Plan, the Environmental Services Functional Area where possible will:

- a. Advise the combat agency and other Functional Areas or Organisations involved in the emergency, on environmentally sound and legal practices for the disposal of waste or contaminated materials resulting from that emergency;
- b. Coordinate clean up of hazardous materials which pose a threat to the environment.

2.19 ENGINEERING SERVICES

2.19.1 In addition to the State Storm Plan the Engineering Services Functional Area where possible will:

- a. Provide support to agencies and Functional Areas within the scope of its capability;
- b. Provide technical engineering and advisory services.

PART 3 - PREVENTION

3.1 GENERAL

- 3.1.1 While it is not possible to prevent significant snow storms from occurring, actions to minimise risk to life and reduce property damage can be undertaken.

3.2 MITIGATION

- 3.2.1 As the mitigation of snow events in the Upper Lachlan is similar to storm events, refer to Part 3 of the NSW State Storm Plan for further details.

PART 4 - PREPAREDNESS

4.1 MAINTENANCE OF THIS PLAN

- 4.1.1 The NSW SES Local Controller will maintain the currency of this plan by:
- a. Ensuring that all agencies, organisations and officers mentioned in it are aware of their roles and responsibilities.
 - b. Conducting exercises to test arrangements as approved by the LEOCON and members of the LEMC.
- 4.1.2 This plan is to be reviewed:
- a. no less than every three years, or;
 - b. after an event with significant snow fall, or;
 - c. on the request of the:
 - NSW SES Local Controller or;
 - Chairperson of the Local Emergency Management Committee.

4.2 TRAINING

- 4.2.1 Throughout this plan there are references to functions that must be carried out by the members of the NSW SES. The NSW SES Local Controller must ensure adequate training is provided to those members.
- 4.2.2 Each member agency within this plan is responsible to prepare and train their own staff required to fulfil their own commitments to meet this plan.

4.3 RESOURCES

- 4.3.1 Each agency is responsible to maintain resources and infrastructure to the ability required to respond to their roles within this plan.

4.4 PUBLIC EDUCATION

- 4.4.1 The NSW SES will coordinate a public education program to educate members of the general public regarding the risks posed during severe weather events including snow storms and what actions should be taken to prepare and respond to them.

4.5 AGENCY COMMUNICATIONS SYSTEMS

- 4.5.1 All agencies are responsible for the establishment and maintenance of their own communication systems.
- 4.5.2 All agencies should check that their communication systems are functioning correctly by the end of April each year prior to the threat of snowfalls.

4.6 SNOW INTELLIGENCE SYSTEM

- 4.6.1 The NSW SES will develop a snow intelligence system for all areas at risk. This system will detail the possible effects resulting from snowfalls at various elevations including warnings, road closures, isolation and disruption to community activities and is added to the annex of this sub plan

PART 5 - CONCEPT OF OPERATIONS

5.1 COMMAND AND CONTROL

- 5.1.1 The NSW SES is the legislated combat agency to protect persons from dangers to their safety and health, and to protect property from destruction or damage, arising from floods, storms and tsunamis, and to act as the combat agency for damage control for storms and to co-ordinate the evacuation and welfare of affected communities.
- 5.1.2 As such the NSW SES is responsible for the control of response operations during a storm which includes the coordination of other agencies and/organisations for storm related emergency management tasks. Significant snowfalls as detailed in the plan are considered as a storm activity.
- 5.1.3 As per the State Storm Plan, the NSWPF are the control (lead) agency for Traffic Control and will close roads affected by snow accordingly. The NSWPF, the RMS and Upper Lachlan Shire Council are the only agencies with the authority to close roads affected by snow and ice.

5.2 OPERATIONS CENTRES

- 5.2.1 The NSW SES maintains a Local Operations Centre at Lot 1, McIntosh Road, Crookwell NSW
- 5.2.2 The Upper Lachlan Local Emergency Operations Centre (LEOC) is located Lot 1, McIntosh Road, Crookwell NSW

5.3 LIAISON

- 5.3.1 At the request of the Incident Controller, each agency with responsibilities identified in this plan will provide a Liaison Officer to the SES Operations Centre.
- 5.3.2 Liaison officers are to:
 - a. Have the authority to deploy the resources of their parent organisations at the request of the Incident Controller;
 - b. Advise the Incident Controller on resource availability for their service, and;
 - c. Be able to maintain two-way communication with their organisation.

5.4 PUBLIC REQUEST FOR ASSISTANCE

- 5.4.1 Members of the public requesting assistance for snow/storm related incidents are to call:
 - a. **000** for life threatening emergencies;
 - b. **132 500** for all other requests for storm related assistance.

5.4.2 To maintain control and coordination of response to snow/storm related incidents, agencies receiving calls from the public are requested to relay those calls or the information of those calls to the NSW SES by pre-established communication systems.

5.5 INFORMATION AND MEDIA

5.5.1 As per the NSW State Storm Plan, the NSW SES is responsible for the management of media and will maintain public information in the form of media release and situational updates via public-accessible electronic/social media sites at regular intervals.

5.5.2 During a snow event, the Incident Controller will issue regular Situational Awareness briefings and timed Situation Reports to the NSW SES Southern Highland Region Headquarters and the LEOCON. Information included in this SITREP and not limited to;

- a. Known details of conditions and roads closed as supplied by the Transport Management Centre and Upper Lachlan Shire Council;
- b. Known details of Bureau of Meteorology Forecasts and Warnings;
- c. Advice on safety matters and means of protecting property;
- d. Status on "Requests For Assistance" (reported incidents) from the community to the NSW SES.

5.5.3 The use of the Emergency Alert service maybe used in accordance with NSW State Storm Plan.

5.6 EMERGENCY ALERT

5.6.1 Where appropriate and possible, and usually in conjunction with other warning messages Emergency Alert (EA) may be used to send SMS and/or voice alerts to land lines and mobile phones within a specified geographic area. The short warning times which apply to some categories of storms and severe weather will preclude the use of EA, however where possible, it could be used to alert for the need to evacuate from dangerous weather conditions.

5.6.2 The Incident Controller is required to consult with the NSW SES Southern Highland Region Controller and the LEOCON to consider if the EA would be appropriate to be used in this plan.

5.6.3 Emergency Alert is operated through the NSW SES State Operations Centre.

PART 6 - RESPONSE

6.1 MOBILISATION

- 6.1.1 The following is a pro-active response through a staged mobilisation of emergency service resources based on the State Storm Plan and local requirements:
- a. **Alert Stage:** When the NSW SES Local Controller receives a warning of a storm or information that snow is likely to impact the Upper Lachlan Shire, or the surrounding LGAs of Cowra Shire Council, Goulburn Mulwaree Council, Hilltops Council, Oberon Council and Yass Valley Council , appropriate organisations and personnel will be alerted.
 - b. **Standby Stage:** When the NSW SES Local Controller considers that an operation is imminent with the evidence that snow has commenced to fall within the Upper Lachlan Shire, all appropriate resources will be placed on standby if necessary and NSW SES Southern Highlands Region Headquarters advised.
 - c. **Call Out Stage:** When the NSW SES Local Controller considers that an operation needs to be mounted, appropriate resources will be called out, and/or outside assistance sought. The trigger for Call Out will be snow has commenced to settle on roads and within the Upper Lachlan Shire Council LGA.
 - d. **Stand Down Stage:** When the NSW SES Local Controller determines support is no longer required.

6.2 PRELIMINARY DEPLOYMENTS

- 6.2.1 When significant snow falls are expected to affect access to and from towns and communities for a protracted period of time, the NSW SES will commence the coordination of deployment of resources into the affected areas as required.
- 6.2.2 When areas are likely to become isolated, each member agency of the LEMC shall be responsible to ensure their own services are maintained to the requirement to that operational capability is maintained.
- 6.2.3 The NSW SES Incident Controller will arrange for reconnaissance utilising NSW SES, Police, NSW RFS and other emergency services for assistance. Reconnaissance is to report the extent of impassable roads, nature and type of damage to properties, any casualties and status of essential energy and utility services

6.3 SNOW CHARACTERISTICS AND CONTROL MEASURES

Level	Characteristics	Road Status	Control Measures
1	Snow Forecast, snow falling, not settling and no impact on community	Open/Clear	"Alert Stage" NSW SES Monitoring Normal agency responsibilities
2	Snow settling on side of road	Open with caution. Monitor for ice. Chains recommended to be carried	"Standby Stage" NSW SES commences to open Local Ops Centre.
3	Snow settling on major and/or connecting roads	Open with caution to be monitored by Police. Snow Chains to be carried Heavy vehicles only with diff locks or cross-locks activated. Heavy Combination vehicles deferred if possible due to high risk of jack knifing.	"Call Out Stage" NSW SES has field teams available in 4WD. Agencies advised of status and NSW SES confirms LO contact details Place of Refuge should be established
4	Snow settled on roads causing closure (2-4 hour period)	Appropriate vehicles (4WD and heavy vehicles) able to continue.	Road blocks to be in place for 2WD and inappropriate vehicles. Suitable 4WD, vehicles with snow chains and heavy vehicles may continue on risk assessment to maintain single lane of traffic in each direction. ESOs and Local residents only permitted to transit with proof of address only.
5	Snow 100-300mm deep Road expected closed 4 hours plus	Road closed 4 hours plus. Essential services only to proceed after risk assessment	LEOCON to consider opening LEOC at a minimum as a support service for NSW SES.
6	Snow deeper than 300mm. Infrastructure disruption (water, electricity, gas)	Road closed for greater than 12 hours.	Recommend Full LEOC operational.

6.4 TRAFFIC MANAGEMENT

- 6.4.1 The NSWPF is the Control (Lead) Agency for Traffic Control and have the authority to close and re-open roads but will normally only do so if public safety requires such action.
- 6.4.2 The NSW SES recommends that roads should be deemed to be closed when the carriageway alignment cannot be clearly defined when covered by snow or is covered with black ice and that vehicles are unable to maintain traction.
- 6.4.3 When resources permit, NSW SES and NSW RFS crews will assist Police, Upper Lachlan Shire Council and RMS personnel with the closure of roads.
- 6.4.4 A number of local and major roads within the Upper Lachlan LGA area maybe affected and could be closed by significant falls of snow.
- 6.4.5 As each snow operation affects different parts of the LGA. Below is a list of High Priority Roads in Upper Lachlan Shire:

Roads Affected by Snow	Comments
Goulburn Road	Normally one of the first roads to require closure, Goulburn Road is considered the main arterial road for the region. A good indicator of snowfalls on this road is in the vicinity of the wind turbines and the property known as "Lake Edward". This section of roadway becomes particularly susceptible to icy surfaces, especially when fallen snow is beginning to melt. Snow build up is generally not as heavy in the vicinity of Pejar Dam.
Binda Road	Binda Road is an alternate main route to Bathurst. The locality of "Wade's Hill" often presents difficulties during snowfalls as the snow depth may be moderate to deep.
Peelwood Road	A secondary route to Bathurst, particularly if Tuena Creek is flooding, this road experiences deep snowdrifts, possibly reaching one to two metres.
Laggan/Taralga Road	When Goulburn Road becomes closed, this road may become an alternate route to Goulburn via Taralga. The Laggan Road may have a covering of snow and is subject to deep drifts in the vicinity of Boongarra Road.
Grabben Gullen Road	This road generally receives considerable snow coverage and has proved difficult to negotiate during snowfalls. The area from McDonald Street to the bottom of the "Deviation" is usually the worst affected area. The undulating road leading up to Anderson Road, and through the deviation may become icy. If possible this road should be graded as soon as possible to allow use by AS NSW to take patients to either Goulburn or Canberra

Roads Affected by Snow	Comments
Boorowa Road	This road is not always covered by snow, however should be monitored.

6.4.6 An attempt to reopen roads should be done as soon as safe, generally after snow has stopped and appropriate vehicles (e.g. tractors, graders, trucks and 4WDs) are able to make a track for vehicles to safely travel on. Upper Lachlan Shire Council/RMS maybe able to supply appropriate plant to assist with the road to be cleared.

6.5 INCREASED ROAD TRAFFIC

6.5.1 Significant snowfalls within the shire may increase the number of sight-seeing public wishing to enter the area to witness the conditions. Traffic controllers at road closures must be made aware that only persons with bonafide reasons should only proceed through snow and only when safe to do so considering the following:

- a. Residents with valid identification;
- b. Vehicles fitted with snow chains;

6.5.2 Examples of bonafide reasons for transit in snow condition include (and not limited to):

- a. Transit to or from place of employment including emergency service workers/volunteers;
- b. Transit to leave the snow affected area for safety.

6.6 STRANDED TRAVELLERS

6.6.1 Snowfalls may strand some travellers within the snow affected areas.

6.6.2 The NSW SES will coordinate suitable tasking of appropriate emergency service personnel with vehicles to patrol roads at regular intervals;

6.6.3 It is recommended that a minimum of two response vehicles to be tasked for patrol:

- a. Lead Vehicle: Stop and check on the welfare of each vehicle and any pedestrians within the snow affected area to ascertain if they require any assistance.
- b. Second Vehicle: To transport any affected persons to:
 - A nominated Place of Refuge;
 - An established evacuation centre;
 - A safe location within reasonable distance, e.g. the victim's home address if within the snow affected area.

- 6.6.4 Major roads are to be patrolled as a priority include:
- a. Grabben Gullen Road
 - b. Goulburn Road
 - c. Laggan/Taralga Road
 - d. Binda Road
 - e. Peelwood Road
- 6.6.5 At the completion of the first patrol, a follow up patrol should be planned within a reasonable time frame dependant on weather and road conditions and available resources;
- 6.6.6 Local roads should be patrolled by available resources when available;
- 6.6.7 The NSW SES will liaise with NSW SES Central Western Region to confirm any requirements to patrol roads within Cowra and Oberon Shire.

6.7 PLACES OF REFUGE

- 6.7.1 A Place of Refuge is not an Evacuation Centre but a location that maybe used as temporary shelter from the prevailing weather condition until;
- a. The weather conditions improve to allow people to safely continue to their destination, or;
 - b. Suitable transport is arranged to transport victims to a nominated Evacuation Centre.
- 6.7.2 A Place of Refuge is a location nominated by either the Incident Controller or the LEOCON with the consent of the owner or their authorised representative dependant on:
- a. Access and egress to the location affected by weather;
 - b. Availability of the facility as determined by the owner or authorised representative of the owner/landlord.
- 6.7.3 Examples of a Place of Refuge may include a suitable fire station, an education or government facility or a council owned property such as a public hall.
- 6.7.4 The establishment of a Place of Refuge should commence during Standby Stage.

6.8 EVACUATION AND EVACUATION CENTRES

- 6.8.1 Evacuation of residents is to be seen as a last resort and a risk assessment must be made by the Incident Controller with the LEOCON with the assistance of the Welfare Functional Area Coordinator;
- 6.8.2 In the event that evacuations during a snow storm are required, the Incident Controller will coordinate evacuations with the LEOCON and members of the LEMC, in particular Health and Welfare Services.
- 6.8.3 Evacuees are to be taken to a nominated evacuation centre to be then processed by FACS.

- 6.8.4 Evacuation centres will be established by the Welfare Services Functional Area as requested by the Incident Controller or LEOCON dependent on:
- a. the number of people stranded or adversely affected by snow requiring emergency accommodation, and;
 - b. the expected duration of the event.
- 6.8.5 FACS will establish these Evacuation Centres at negotiated sites such as large service or community clubs

6.9 ESSENTIAL SERVICES

- 6.9.1 To maintain adequate support, essential service providers should keep the Incident Controller and LEOCON abreast of their status and ongoing ability to provide those services including their current contact details or have a Liaison Officer attend the Operations Centre.
- 6.9.2 The NSW SES will ensure that the providers of essential services (electricity, gas, water, sewerage, medical and public health) in the area affected are kept advised of the snow situation and prognosis.
- 6.9.3 The NSW SES will assist where possible with the coordination of transport and/or personnel to assist in the delivery of essential services to the affected community.

6.10 RESUPPLY

- 6.10.1 The NSW SES is responsible for the coordination and resupply of isolated communities and properties.
- 6.10.2 Where practicable, the NSW SES will arrange for the delivery from normal suppliers of essential foodstuffs, fuels or urgent medical supplies required by isolated towns, villages or properties, this includes generators for the provision of emergency power. This may be done using high clearance vehicles or aircraft.

6.11 ASSISTANCE FOR ANIMALS

- 6.11.1 Matters relating to the welfare of livestock, companion animals and wildlife (including feeding and rescue) are to be referred to Animal and Agriculture Services Functional Area. This includes requests for emergency supply and/or delivery of fodder to stranded livestock, or for livestock rescue.

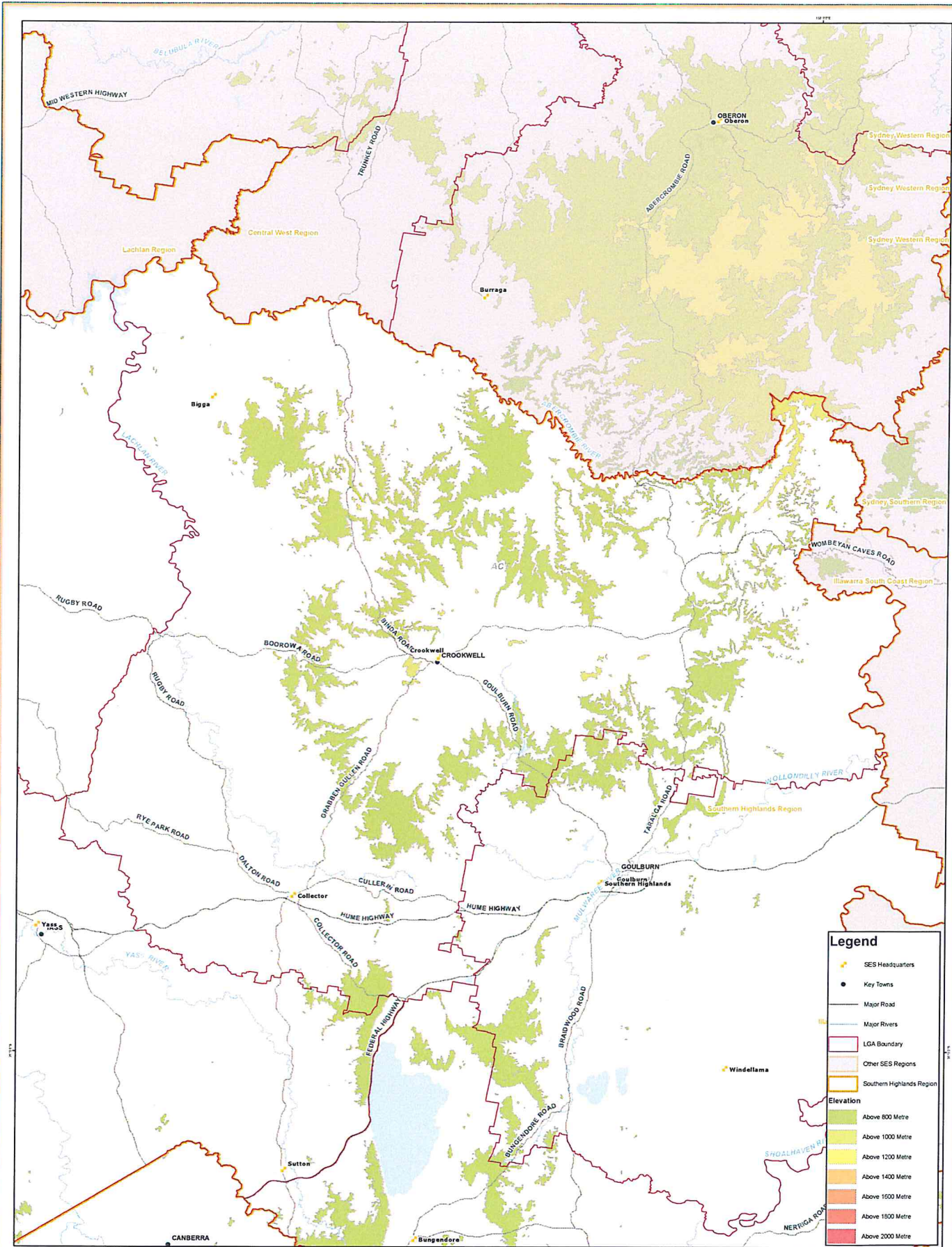
6.12 END OF RESPONSE OPERATIONS

- 6.12.1 When the danger to life and property has passed, the Incident Controller will issue an 'All Clear' message to all emergency service organisations and agencies involved with the operation signifying that response operations have concluded.
- 6.12.2 This message will also advise details of arrangements for evacuated residents to return to their homes or indicate what longer-term accommodation arrangements have been made for those unable to do so.
- 6.12.3 The "All Clear" maybe only issued for areas that are deemed safe. Other areas still affected within the LGA may remain at alert stage.

PART 7 - RECOVERY

7.1 RECOVERY OPERATIONS

- 7.1.1 This plan describes the initiation of recovery, but not the arrangements for recovery itself.
- 7.1.2 Recovery operations will be initiated and conducted as described in the NSW State Emergency Management Plan (EMPLAN) Part 9 and as further detailed in the NSW Recovery Plan.
- 7.1.3 NSW SES will provide impact information as early as possible (ideally within 24 hours) following a major storm to the SEOCON or delegated Emergency Operations Controller to inform an initial recovery impact assessment.
- 7.1.4 NSW SES will provide appropriate representation to the Recovery Committee, if established, for the duration of the response phase of an event and as agreed during the recovery phase.
- 7.1.5 The role of NSW SES on the Recovery Committee may include providing information about any continuing response, guidance on mitigation strategies and general advice and assistance to the committee as a subject matter specialist.
- 7.1.6 There will often be a need for emergency services to assist in the recovery phase of a storm operation. This can involve physical clean-up or maintenance of temporary covering.



Legend

- SES Headquarters
- Key Towns
- Major Road
- Major Rivers
- LGA Boundary
- Other SES Regions
- Southern Highlands Region

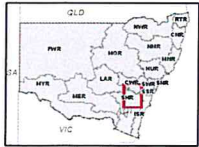
Elevation

- Above 800 Metre
- Above 1000 Metre
- Above 1200 Metre
- Above 1400 Metre
- Above 1600 Metre
- Above 1800 Metre
- Above 2000 Metre

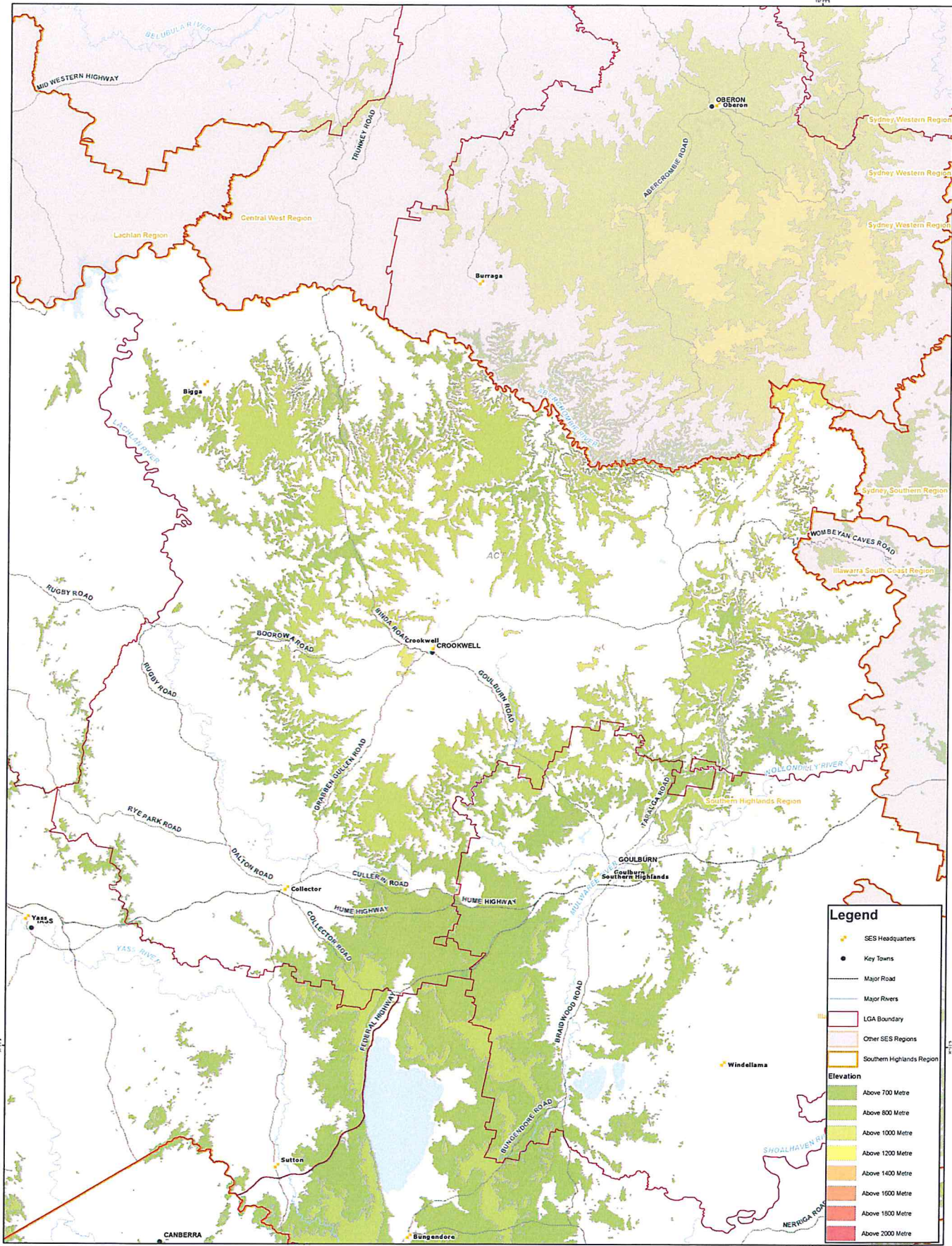
COPYRIGHT
 © State of New South Wales through NSW State Emergency Service 2016
 © State of New South Wales through NSW Land and Property Information 2016
 Without Prejudice - in anticipation of litigation
THIS MATERIAL IS COPYRIGHT
 No part of this map may be reproduced without written permission.
DISCLAIMER
 This map publication is presented by the NSW State Emergency Service for the purpose of disseminating emergency management information free of charge to members of emergency management organisations. The information in this map publication is not intended for use by the general public or untrained persons, and is not a substitute for professional advice and/or training. Untrained persons should not use this map publication unless they are under the supervision of trained and qualified emergency management personnel. The State Emergency Service disclaims any liability (including for negligence) to any person in respect of anything and the consequences of anything, done, or not done by any such person in whole or partial reliance upon the whole or part of the information in this map publication.

Southern Highlands Region

Upper Lachlan Shire LGA Severe Alpine Weather Map



0 500 1,000 1,500
Kilometres



Legend

- ★ SES Headquarters
- Key Towns
- Major Road
- Major Rivers
- LGA Boundary
- Other SES Regions
- Southern Highlands Region

Elevation

- Above 700 Metre
- Above 800 Metre
- Above 1000 Metre
- Above 1200 Metre
- Above 1400 Metre
- Above 1600 Metre
- Above 1800 Metre
- Above 2000 Metre

COPYRIGHT
 © State of New South Wales through NSW State Emergency Service 2016
 © State of New South Wales through NSW Land Property Information 2016

Without Prejudice - in anticipation of Litigation

THIS MATERIAL IS COPYRIGHT
 No part of this map may be reproduced without written permission.

DISCLAIMER
 This map publication is presented by the NSW State Emergency Service for the purpose of disseminating emergency management information free of charge to members of emergency management organisations. The Data/Info GDA1984/Not projected information in this map publication is not intended for use by the general public or untrained persons, and is not a substitute for professional advice and/or training. Untrained persons should not use this map publication unless they are under the supervision of trained and qualified emergency management personnel. The State Emergency Service disclaims any liability (including for negligence) to any person in respect of anything and the consequences of anything, done or not done by any such person in whole or partial reliance upon the whole or part of the information in this map publication.

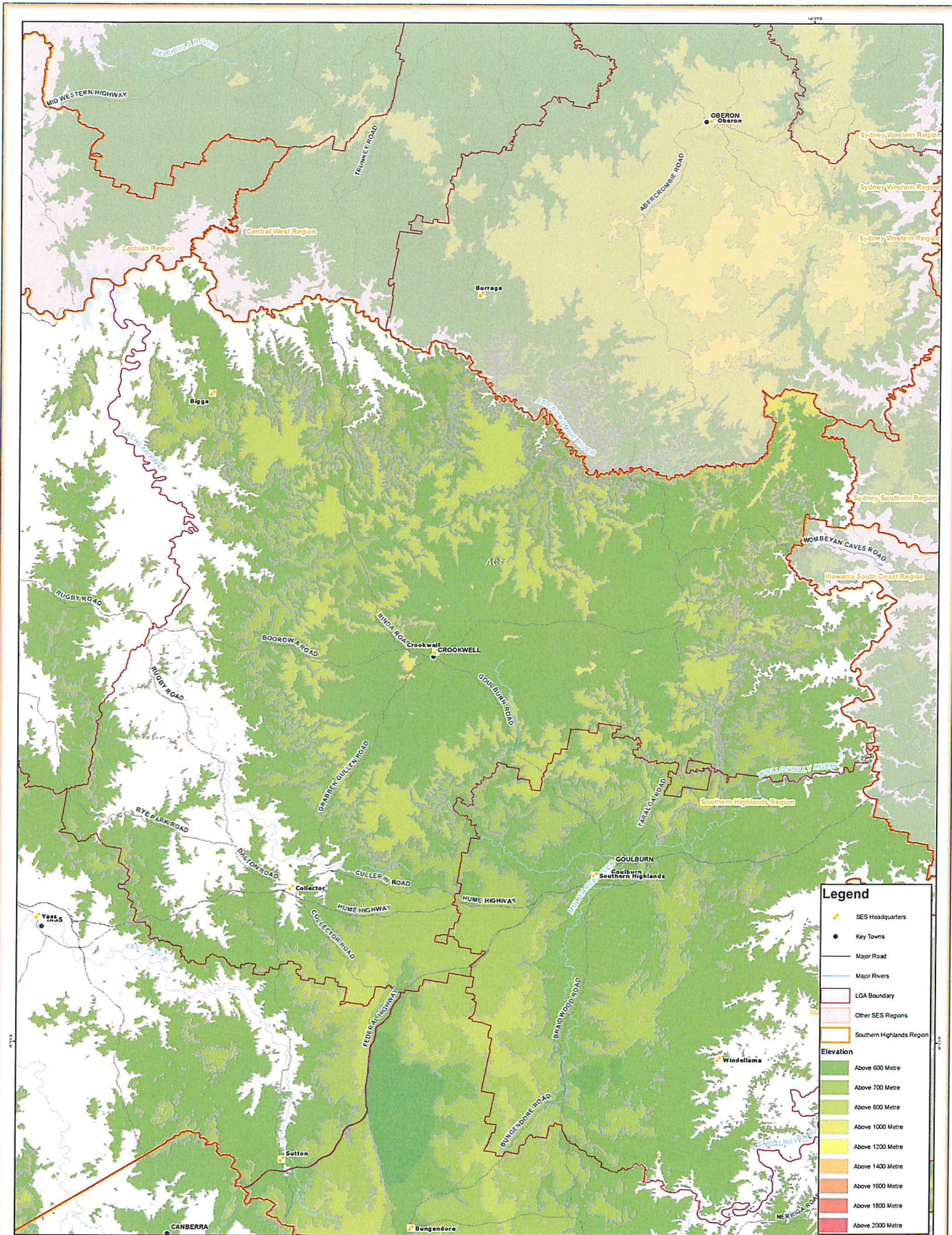
Map publication prepared by the NSW State Emergency Service
 Geospatial Intelligence Branch
 SES State Headquarters
 Production Date: 26/01/2016
 Task No: 201516_003

Southern Highlands Region

Upper Lachlan Shire LGA Severe Alpine Weather Map



0 500 1,000 1,500
Kilometres



Legend

- ★ SES Headquarters
- Key Towns
- Major Road
- Major Rivers
- LGA Boundary
- Other SES Regions
- Southern Highlands Region

Elevation

- Above 600 Metre
- Above 700 Metre
- Above 800 Metre
- Above 1000 Metre
- Above 1200 Metre
- Above 1400 Metre
- Above 1600 Metre
- Above 1800 Metre
- Above 2000 Metre

COPYRIGHT
 © State of New South Wales through NSW State Emergency Service 2016
 © State of New South Wales through NSW Land and Property Information 2016

Without Prejudice - In anticipation of Litigation

THIS MATERIAL IS COPYRIGHT
 No part of this map may be reproduced without written permission.

DISCLAIMER
 This map publication is presented by the NSW State Emergency Service for the purpose of disseminating emergency management information free of charge to members of emergency management organisations. The information in this map publication is not intended for use by the general public or untrained persons, and is not a

substitute for professional advice and/or training. Untrained persons should not use this map publication unless they are under the supervision of trained and qualified emergency management personnel. The State Emergency Service disclaims any liability (including for negligence) to any person in respect of anything and the consequences of anything done, or not done, by any such person in whole or partial reliance upon the whole or part of the information in this map publication.

Map publication prepared by the NSW State Emergency Service
 Geospatial Intelligence Branch
 SES State Headquarters
 20/01/2016
 GDA1984
 Not projected
 Task No: 201516_003

Southern Highlands Region

Upper Lachlan Shire LGA Severe Alpine Weather Map



10 000

0 500 1,000 1,500

Kilometres

10 000