

During a flood

Flood Warnings are issued by the Bureau of Meteorology (Bureau) when flooding is about to happen or is already happening. A Flood Warning provides a predicted flood height on a river gauge and times at which the height will reach, exceed or peak.

During a flood, there are some simple things you can do to stay safer:

- ⚠ Never drive, ride or walk through floodwater.
- ✓ Keep listening to your local radio station for information, updates and advice.
- ✓ Keep in contact with your neighbours.
- ✓ Be prepared to evacuate if necessary.

Evacuate

During a flood the NSW SES and other emergency services may ask you to evacuate.

The NSW SES aims to keep people safe and minimise the risk to life and property when floods occur. Follow evacuation advice. Being prepared will allow you to respond quickly should you need to evacuate.

- ✓ Locate important papers, valuables and mementos. Put them in your emergency kit
- ✓ Take your emergency kit with you
- ✓ Turn off the electricity and gas at the mains before you leave and turn off and secure gas bottles
- ✓ Stack possessions, records, stock or equipment on benches and tables, placing electrical items on top
- ✓ Secure objects that are likely to float and cause damage
- ✓ Relocate waste containers, chemicals and poisons well above floor level
- ✓ Prepare to take your pets with you
- ✓ Act early before roads to high ground are closed by floodwater

After a flood

Keep away from flood affected areas until emergency services advise that it is safe to return. These areas can be dangerous for the health and safety of you and your family. Discard all food that has come into contact with floodwater and clean and sanitise your belongings.

A local recovery centre may be established by a range of government departments and community agencies. You may be able to get advice on everything from insurance to counselling. In the event of a flood, information is available from Disaster Welfare Services on **1800 018 444** or emergency.nsw.gov.au

Stay informed

Kempsey Shire Council provides information on the height at which your property may be affected by floodwater. Flood information, road closures and advice on evacuations will be broadcast over local radio stations:

95.5 FM ABC 103.1 FM TANK FM

Flood predictions and river height information are available from the Bureau of Meteorology. NSW SES issue flood bulletins with information on what may happen and safer actions. It is important to know the height that affects your business in terms of isolation, inundation and evacuation.

How the NSW SES helps the community

The NSW SES is responsible for the emergency management of floods in NSW. This includes planning for floods and working with communities about how to protect themselves and their property.

During floods the NSW SES will provide flood information and safety advice, can arrange for the delivery of essential supplies, conduct evacuations and undertake flood rescues.

Emergency contacts & support

Police, Fire and Ambulance - 000 (triple zero)
Life-threatening emergencies.

NSW SES Emergency Assistance - 132 500
The deaf, hard of hearing or speech impaired can call Triple Zero (000) or SES on (132 500) using the National Relay Service (NRS).

My RoadInfo
myroadinfo.com.au for local road information.

Kempsey Shire Council
(02) 6566 3200
kempsey.nsw.gov.au for local road closure information.

Bureau of Meteorology
bom.gov.au/nsw for the latest flood and weather warnings.

Local Land Services
1300 795 299
lls.nsw.gov.au for support services where agriculture and animals are affected.

Disaster Welfare Services 1800 018 444
emergency.nsw.gov.au for flood recovery services.

Department of Primary Industries
dpi.nsw.gov.au for support services where agriculture and animals are affected.

Essential Energy 132 080
essentialenergy.com.au for supply and outages.

Telstra 132 203
telstra.com.au for service disruptions in a disaster.



FOR EMERGENCY HELP IN FLOOD,
STORM AND TSUNAMI CALL

132 500

In life-threatening emergencies call 000 (triple zero)

For further information about flooding visit
ses.nsw.gov.au



February 2018



Kempsey CBD

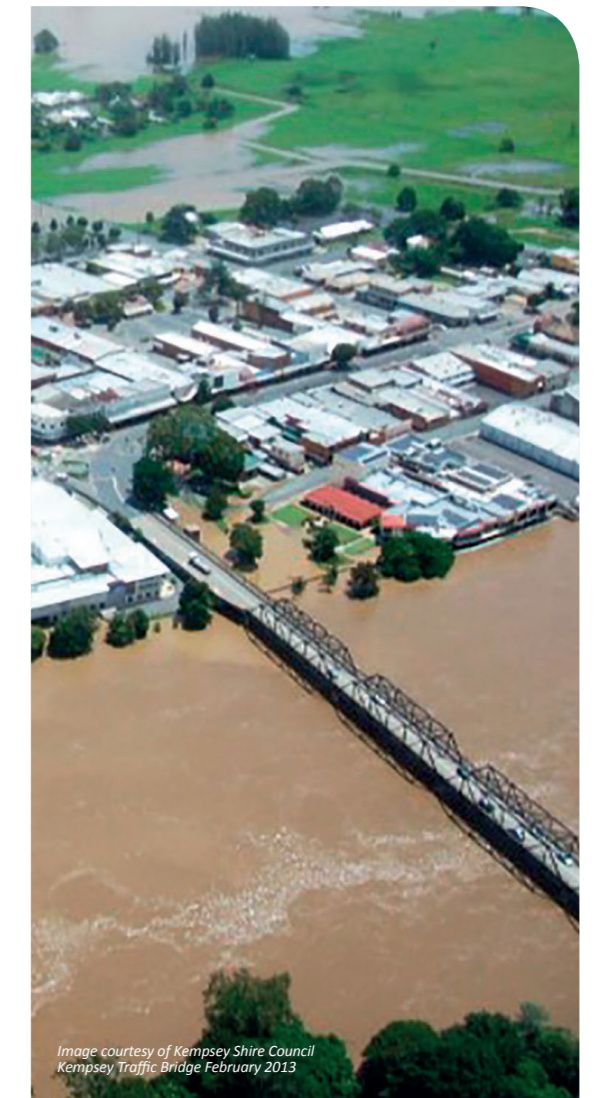


Image courtesy of Kempsey Shire Council
Kempsey Traffic Bridge February 2013



Community FloodSafe

Are you at risk from floods?

The Central Business District (CBD) of Kempsey has a long history of damaging floods. Floodwater may be deep, fast flowing and carry large amounts of debris.

The CBD is protected by a series of levees (Cochrane Street, RSL and Eden Street levees). The levee may overtop in major floods, where the Macleay River is predicted to exceed or peak over 6.6 metres at the Kempsey Traffic Bridge gauge (Kempsey gauge). The overtopping height and sequence of overtopping can vary between floods. This height has been exceeded in 15 floods since European settlement.

The 2001 flood (7.44 metres at the Kempsey gauge) went over the levee system causing major inundation and damage to the CBD. Some 96 businesses experienced over floor flooding resulting in \$4.4 million in damages and lost profits. This flood was the seventh largest flood recorded in Kempsey. Larger and more damaging floods have occurred in the past and will occur again.

The flood of record occurred in 1949, peaking at 8.52 metres at the Kempsey gauge. The devastation of the 1949 flood was described on page 1 of the Canberra Times, Monday 29th August 1949, edition:

“The flood struck with extraordinary rapidity and fierceness. It swept into Smith Street within a matter of minutes and crashed through windows, uprooting roadways and shop foundations.”



Image courtesy of Kempsey NSW SES Unit
Kempsey CBD March 2001

What happens in Kempsey floods?

| Heights at gauge | Expected consequence |
|------------------|--|
| 8.52m | Peak height June 1949. Largest flood on record. Deep fast flowing floodwaters claimed six lives, destroyed 35 buildings and caused severe damage to the CBD. |
| 7.68m | Peak height May 1963 flood. The entire CBD flooded. |
| 7.4m | Peak height March 2001 flood. Major inundation of CBD, 96 businesses were flooded in Belgrave, Stuart, Forth, Clyde, Verge and Smiths Streets. |
| 7.1m | Peak height February 2013 flood. Parts of the CBD flooded. |
| 6.6m | Major flood level Targeted Evacuation Orders may be issued for floods predicted to exceed this height. CBD levees may overtop. Prepare for flooding and be ready to evacuate well before this height is reached. |
| 5.7m | Moderate flood level Roads on the Lower Macleay (South West Rocks & Smithtown Roads) are likely to be flooded, isolating Kinchela, Smithtown, Gladstone, South West Rocks, Hat Head and Jerseyville. Businesses and residents are encouraged to review their emergency flood plan arrangements and be ready to act early. |
| 4.5m | Minor flood level Areas close to the river and surrounding rural areas may be flooded. |

Key heights in metres at the Kempsey CBD gauge

The Kempsey Clyde Street Mall has a flood marker that shows the peak heights of the 1949, 1963 and 2001 floods. The marker is a useful guide in understanding how future floods may affect your business.

What you can do now

8 TIPS

- 1

KNOW YOUR FLOOD RISK


- 2

KNOW WHERE TO GO


- 3

KNOW WHO TO CALL


- 4

KNOW YOUR PLAN


- 5

GET YOUR KIT TOGETHER


- 6

PREPARE NOW TO ACT EARLY


- 7

CHECK YOUR INSURANCE


- 8

LISTEN TO LOCAL RADIO



BUREAU FLOOD HEIGHT TERMINOLOGY

| | |
|---------------|---|
| EXCEED | The river level will definitely pass this height based on current rainfall. |
| REACH | Highest level expected based on current or forecast rainfall. Further rainfall or tributary inflows mean the flood level could go higher. |
| PEAK | Rainfall has eased or stopped, this is the highest expected river height. |

When planning for floods, consider further rises when rivers are predicted to reach or exceed certain heights.

Assistance for animals

NSW Department of Primary Industries coordinate animal welfare and relief services for livestock, wildlife and companion animals. This may include assistance for animal care services and emergency fodder supply in areas affected by a flood emergency.

When flooding is likely

A Flood Watch is issued by the Bureau of Meteorology when flooding is likely. Act early should flooding occur.

RESIDENTS:

- Listen to your local radio station for information, updates and advice.
- Locate and check your emergency kit and follow your Emergency Plan. Go to ses.nsw.gov.au
- Check on your neighbours and make sure they are aware of possible flooding.
- Prepare to move pets, including agisted animals to high ground.

BUSINESS OWNERS AND MANAGERS:

- Follow your Business FloodSafe Plan, developed by working through the Emergency Business Continuity Kit on the NSW SES website ses.nsw.gov.au
- Check neighbouring businesses are aware of possible flooding.
- Back up records and store off-site.
- Make preparations to raise or relocate stock, records and equipment.
- Check the evacuation routes for your business and make sure your employees know when they are likely to close. This will ensure they can leave before flooding occurs.



Image courtesy of NSW SES Kempsey Unit
Mavin's Service Station, Belgrave Street 2001