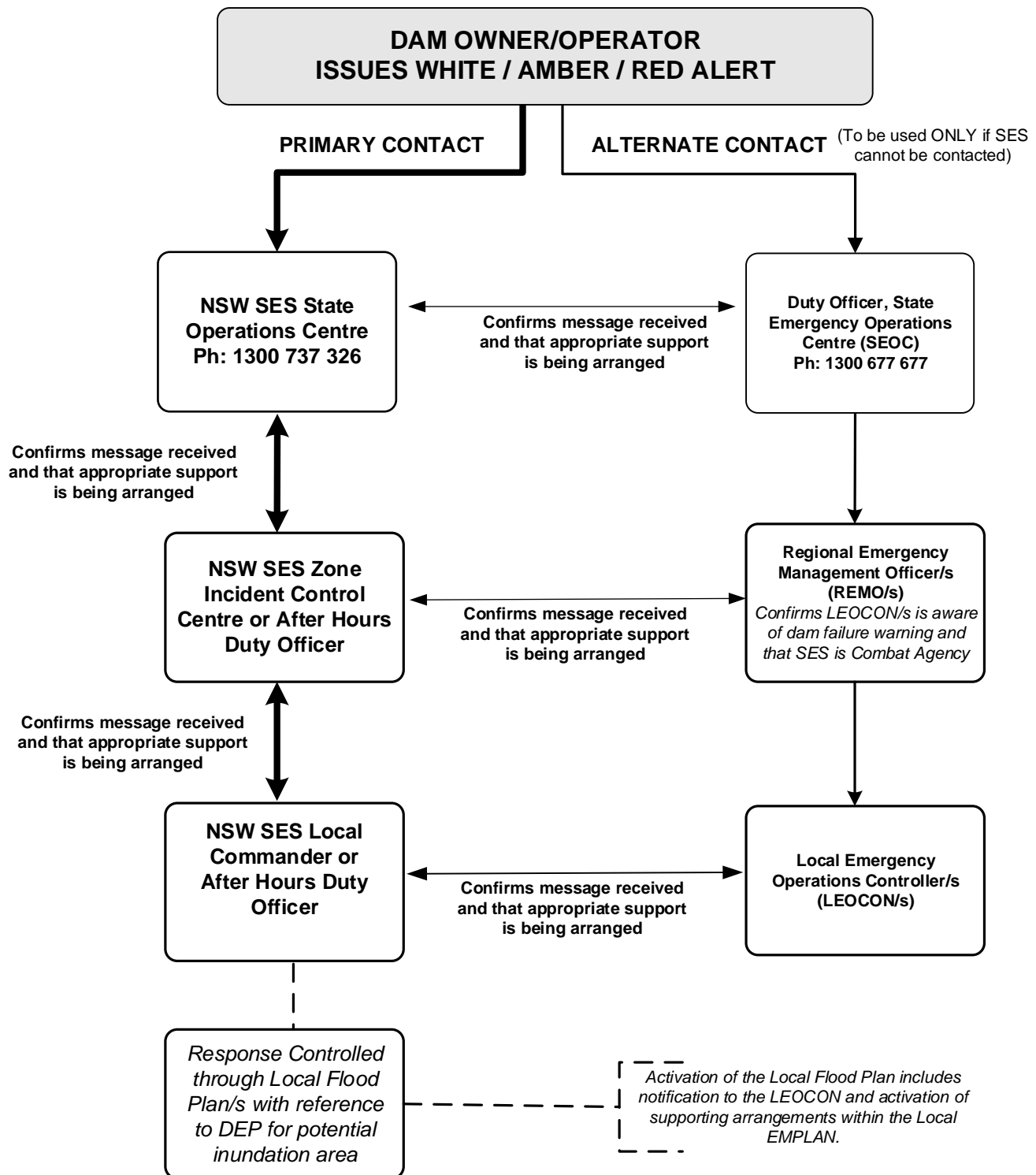


NSW SES Notification Arrangements for Potential Dam Failure



NOTES: (As at 21 May 2021)

1. Dam owners should only contact the SEOC if the NSW SES State Operations Centre (SOC) cannot be contacted.
2. The first priority for notification is to contact the NSW SES State Operations Centre. If unavailable, contact the SEOC. At each level, the contacted agency should notify the alternate contact at the same level, before making contact further down the line.
3. The triple zero (000) number for emergency services should only be used if both the NSW SES and the SEOC cannot be contacted, as it is likely the triple zero (000) operators will have difficulty dealing with the very unusual case of potential or actual dam failure.
4. Dam owners should send their Draft Dam Emergency Plan (DEP) to the NSW SES for review of the emergency management arrangements (nswses.communityplanning@ses.nsw.gov.au).